



# Creating a Community Clean Power Roundtable

## Family Health Center Overview

**Larry K. McReynolds, DHA**  
Executive Director

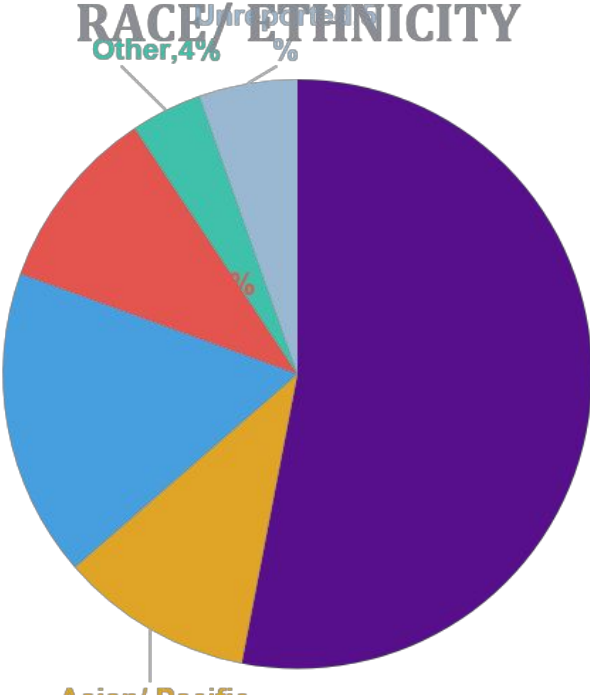
January 25, 2024

# Family Health Centers at NYU Langone – Who We Are

- The Family Health Centers at NYU Langone (FHC) is one of the nation’s **largest federally qualified health center (FQHC) networks** in the nation
- We are deeply committed to providing **top-notch, world-class patient care** to the **broad and diverse patient population we serve across Brooklyn**, regardless of a patient’s ability to pay or health insurance status

### Who We Served in 2022 -- By the Numbers:

- **103,493** unique patients (source: UDS)
- **612,909** patient visits each year (source: UDS)
- **7,684** homeless patients(source: UDS)
- **2,070** prenatal patients (source: UDS)
- **43%** of patients are best served in a language other than English (source: UDS)
- **65%** of patients are enrolled in Medicaid or Medicaid managed care program (source: FHC finance)
- **75%** of patients (for whom we collect this information) are 200% or below the Federal Poverty Line, which is used to calculate eligibility for Medicaid and CHIP (source: UDS)
  - For context, 200% of FPL in NY is defined as a single person making less than \$29,160 or Family of 4 making less than \$60,000
- **45%** of households are rent burdened









# Family Health Centers at NYU Langone – Services We Provide

Clinic-Based Programs

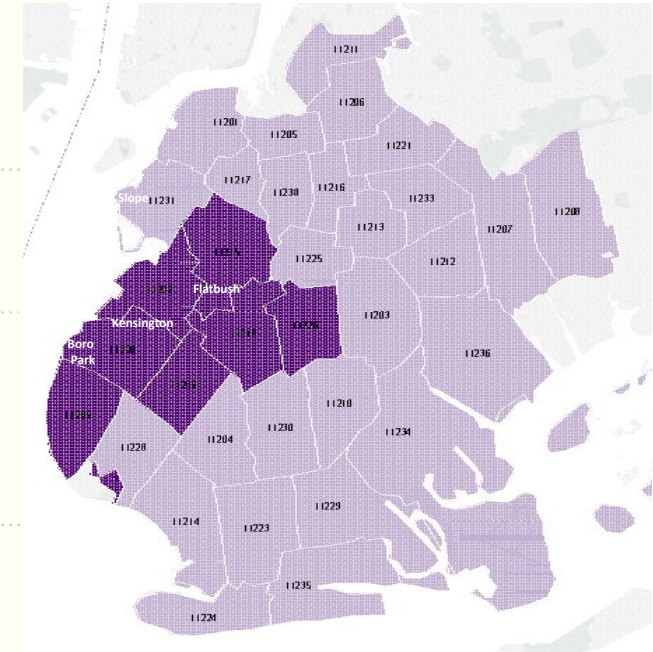
Services

Clinics

Encounters  
(CY 2022)

	<b>Medical</b>	<ul style="list-style-type: none"> <li>○ Primary &amp; Specialty Care for Adults</li> <li>○ Women’s Health</li> <li>○ Pediatrics</li> </ul>	<b>8</b>	<b>251k</b>
	<b>Dental Clinics</b>	<ul style="list-style-type: none"> <li>○ General &amp; Specialty Dentistry for Adults</li> <li>○ Pediatric Dentistry</li> <li>○ Oral Surgery</li> <li>○ Orthodontics</li> </ul>	<b>6</b>	<b>95k</b>
	<b>School Health</b>	<ul style="list-style-type: none"> <li>○ Primary Care (16)</li> <li>○ Behavioral Health (21)</li> <li>○ Dental Care (44)</li> </ul>	<b>57</b>	<b>63k</b>
	<b>Behavioral Health</b>	<ul style="list-style-type: none"> <li>○ Group &amp; Family Therapy</li> <li>○ Psychiatric Evaluations &amp; Psychologic Testing</li> <li>○ Medication Management</li> <li>○ Case Management</li> </ul>	<b>1</b>	<b>94k</b>
	<b>Rehab</b>	<ul style="list-style-type: none"> <li>○ Physical Therapy</li> <li>○ Occupational Therapy</li> <li>○ Speech-Language Pathology &amp; Audiology</li> </ul>	<b>5</b>	<b>58k</b>
	<b>Community Medicine</b>	<ul style="list-style-type: none"> <li>○ Primary Care</li> <li>○ Behavioral Health</li> </ul>	<b>9</b>	<b>17k</b>

## Primary Service Areas in Brooklyn



**Grand Total**

**86**

**578k**



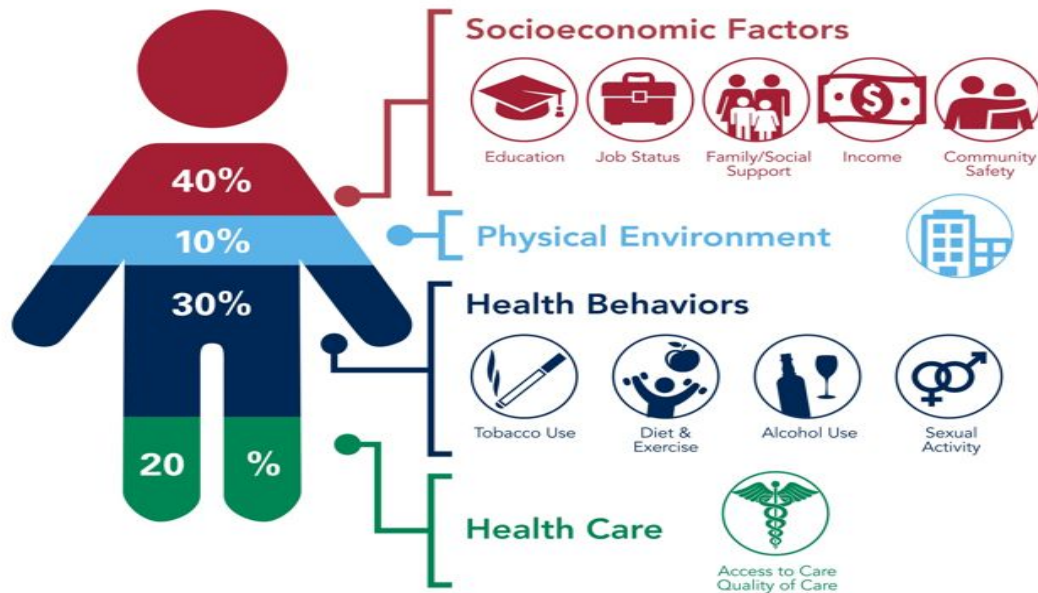
# Family Health Centers at NYU Langone – Community-Based Programs (CBP)

## Addressing Social Determinants Of Health (SDOH)

The Department of Community Programs launched Compass Rose, an EPIC social care module to:

- ✓ **integrate social and health indicators** into a unified EMR
- ✓ improve provider SDOH **referral pathways**
- ✓ create **feedback functionality** within EPIC

### Social Determinants of Health



Source: Institute for Clinical Systems Improvement; Going Beyond Clinical Walls: Solving Complex Problems, 2014 Graphic designed by Pro

### Community Based Programs' family support counselors help patients and residents to:

- Enroll in SNAP and other benefits
- Connect to:
  - **The Table Food Pantry**
  - **WIC (Women, Infant, and Children) Supplemental Nutrition Program**
  - **Neighborhood Senior Centers**
  - **Other FHC Community Programs:** ESOL and Adult Education/Workforce Development, Early Childhood Centers, Parenting Supports, Youth Development, etc.
  - **Community resources outside of FHC (housing, legal)**



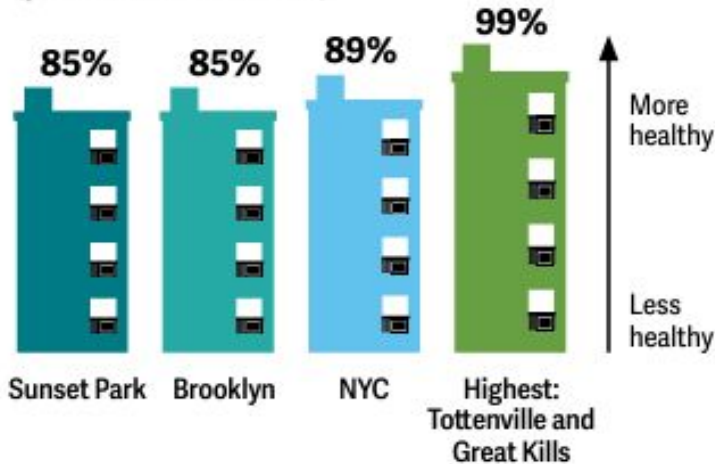
# Housing & Neighborhood Conditions

## Air conditioning

Most heat stroke deaths in NYC occur in homes without air conditioning. Nearly nine out of 10 households in **Sunset Park** have working air conditioners.

### AIR CONDITIONING

(percent of households)



Source: NYC Housing and Vacancy Survey, 2014

## Air pollution

Though air quality is improving in NYC in general, it varies by community district. In **Sunset Park**, levels of the most harmful air pollutant, fine particulate matter (PM2.5), are 8.5 micrograms per cubic meter.

### AIR POLLUTION

(micrograms of fine particulate matter per cubic meter)



Source: NYC DOHMH, Community Air Survey, 2016

**HIGH LEVEL OF VULNERABILITY ON THE SOCIAL VULNERABILITY INDEX  
(IN THE 99<sup>TH</sup> PERCENTILE BY CENSUS TRACKING BETWEEN 2012-2016)**



For successful development of this project, a key consideration should be reinvestment of proceeds into community-based organizations and populations in the area.

Thank You

