



# Speaker Challenge: Critical Infrastructure, Equity, and Resilience

Eliza Hotchkiss

*Senior Resilience Analyst*

Energy Security and Resilience Center, NREL



Photo credits: Dennis Schroeder, NREL

## Equity is...

providing various approaches to engagement, recognizing that people may need more or different support, holistic to include different perspectives, and practices, programs, and policies that ensure culturally responsive access and opportunity.

## Estimated Increases in the White-Black Wealth Gap between 1999 and 2013 Attributable to Natural Hazards Damage\*



\*Source: Howell, Junia and James R. Elliott. "Damage Done: The Longitudinal Impacts of Natural Hazards on Wealth Polarization in the United States." *Social Problems*. DOI: 10.1093/socpro/spy016  
 Note: Circle diameters are proportion to the amount of increased White-Black wealth inequality attributed to Natural Hazard Damages.



Photo Credits: Eliza Hotchkiss, NREL

## Resilience Roadmap

A Collaborative Approach to Multi-Jurisdictional Planning



To mitigate hazards and risks, the Resilience Roadmap offers comprehensive guidance for federal, state, and local entities to effectively convene at the regional level for adaptable and holistic planning. This multi-jurisdictional approach requires major cooperation across boundaries, considerable reliance on partnerships and multi-agency collaborations, and significant utilization of interdisciplinary teams.

### Step-by-Step Process

To constructively lead intergovernmental planning efforts with tangible outputs, follow these steps in order:

- 1 Intergovernmental Preparation and Coordination
- 2 Planning and Strategy Development
- 3 Plan Adoption, Implementation, and Evaluation

Learn about how the resilience roadmap process was developed [\[link\]](#)

#### WHAT IS RESILIENCE?

The ability to anticipate, prepare for, and adapt to changing conditions and withstand, respond to, and recover rapidly from disruptions through adaptable and holistic planning and technical solutions.

Contact Eliza Hotchkiss with questions about the resilience planning process.

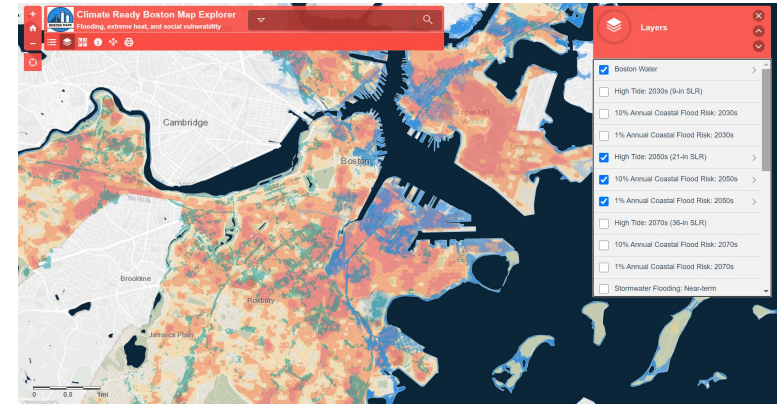
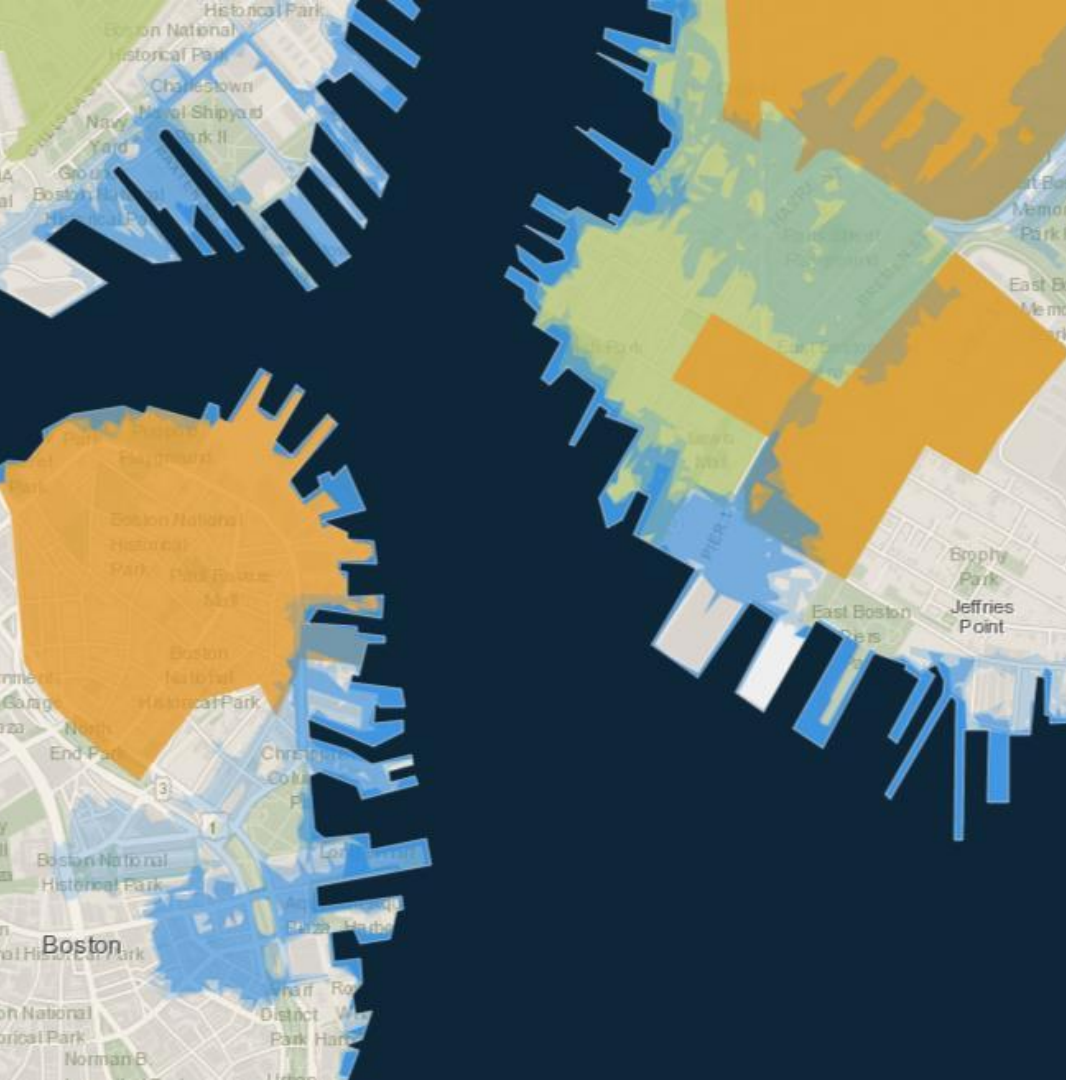


<https://www.nrel.gov/resilience-planning-roadmap>

K. Anderson, E. Hotchkiss, L. Myers, and S. Stout, "Energy Resilience Assessment Methodology," *Renewable Energy*, p. 29, 2019.

# NREL sees resilience as...

the process of using stakeholder engagement and the latest scientific research to holistically include different perspectives, practices, programs, and policies that ensure culturally responsive and place-based solutions to equitably survive disruptive events.



Overlaying Boston's 'social vulnerability: medical illness' (orange) and 'social vulnerability: children' (green) as well as park infrastructure yields interesting results



A critical obstacle to overcome is...

understanding the biggest resilience gaps for taking action to support infrastructure designs that serve communities equitably.

# Thank You

[www.nrel.gov](http://www.nrel.gov)

[Eliza.Hotchkiss@nrel.gov](mailto:Eliza.Hotchkiss@nrel.gov)

