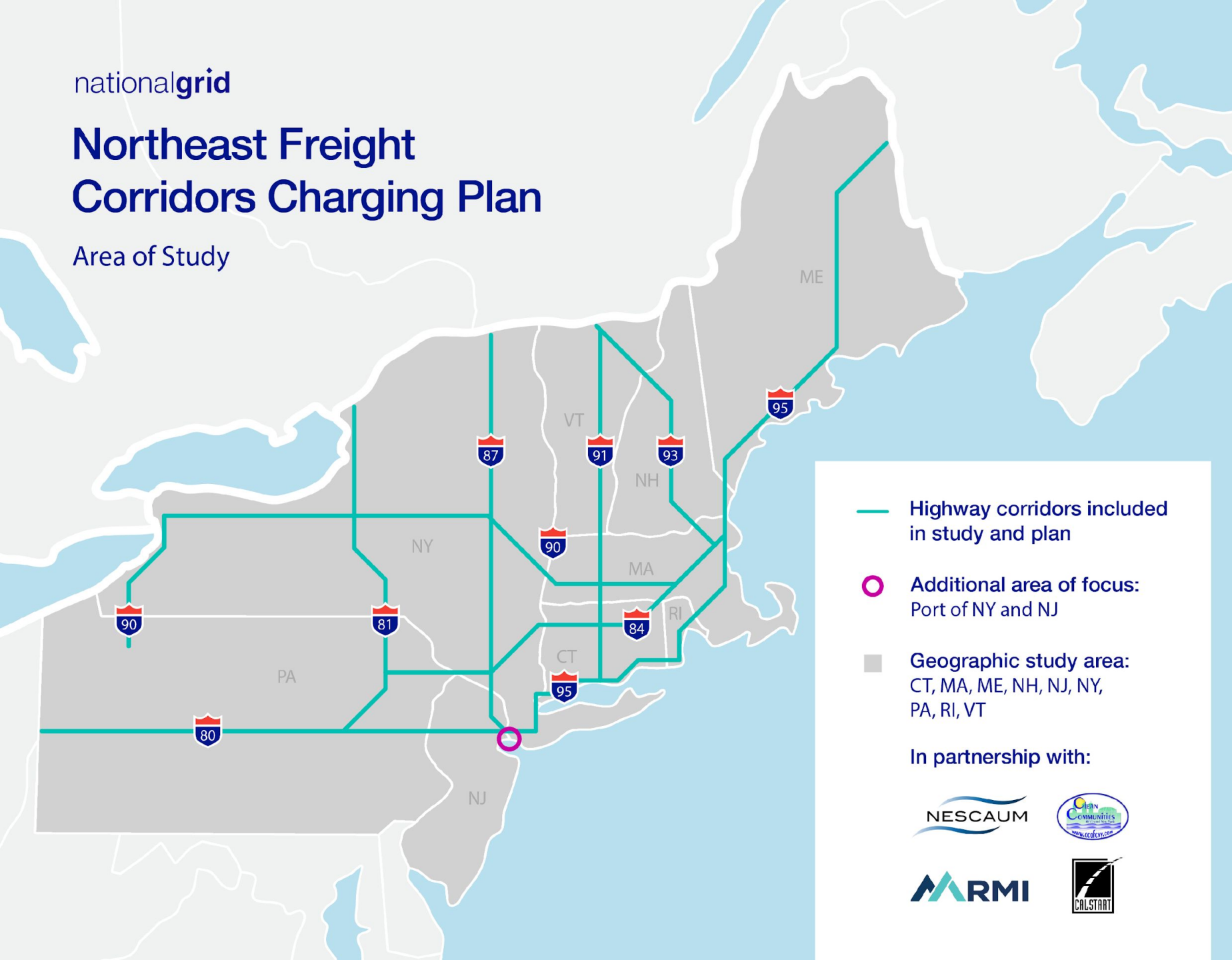


nationalgrid

Northeast Freight Corridors Charging Plan

Area of Study



— Highway corridors included in study and plan

○ Additional area of focus: Port of NY and NJ

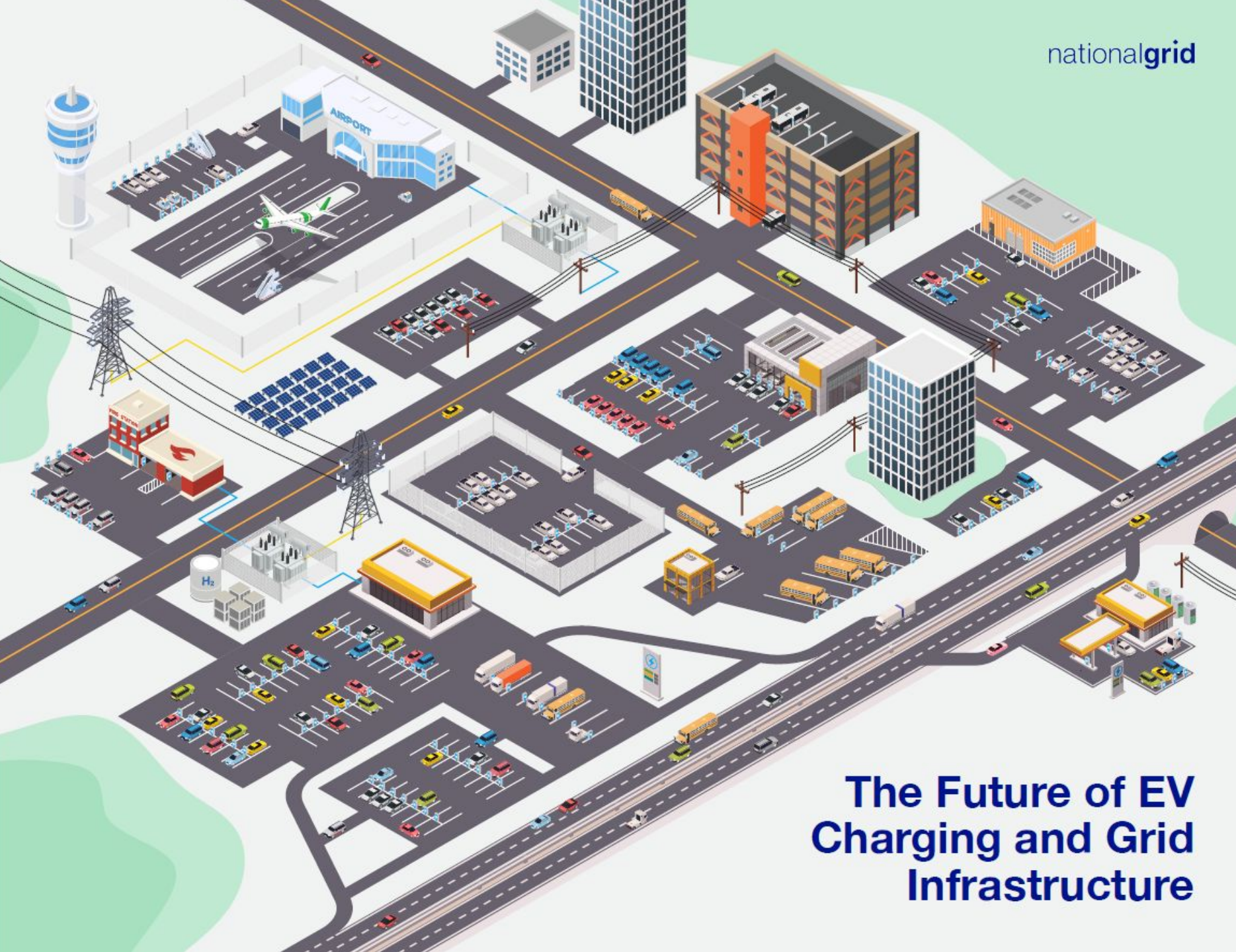
■ Geographic study area: CT, MA, ME, NH, NJ, NY, PA, RI, VT

In partnership with:



Our approach to solving the corridor charging “puzzle” in the Northeast:

- Rigorous analysis from leading organizations
- Planning with a bias towards action
- The right stakeholders all in the same room – solving for the future together



For the first time in 100 years, our transportation networks and electric networks are integrating.

This presents major opportunities – **but an “all hands on deck” approach is needed to make clean transportation a reality.**

The Future of EV Charging and Grid Infrastructure

Urgency: by this time next year, we need to take major action

14 months until 2025... when ACC-II targets 35% LDV sales as ZEVs

26 months until 2027... when all new school buses in New York must be electric

74 months until 2030... when ACC-II targets over 50% LDV sales as ZEVs and ACT targets over 30% MHDV sales as ZEVs