

SELECTED OBSTACLE

To provide more affordable, equitable EV charging costs for multifamily and limited income customers across the region.

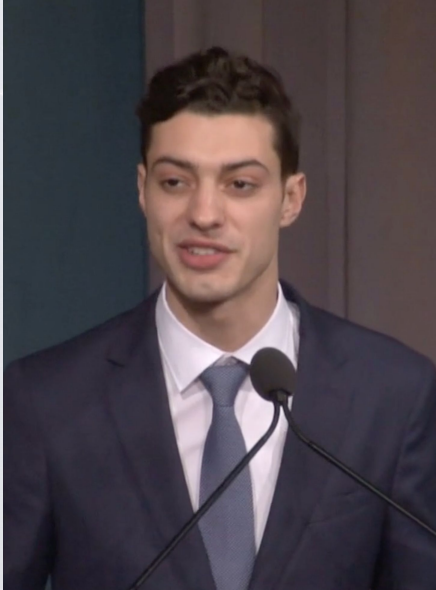
- **DIVESH GUPTA**
DIRECTOR OF STRATEGY,
UTILITY OF THE FUTURE



22Q4 CLEAN TRANSPORTATION
12 MONTH SOLUTION:
**Report/recommendations on what
multi-family tenants & owners are
looking for in EV charging.**

- M1:** Identify outreach targets & information needs.
- M2:** Conduct outreach
- M3:** Synthesize findings
- M4:** Present findings at public technical workshop

22Q4 CLEAN TRANSPORTATION TASK FORCE SUMMARY

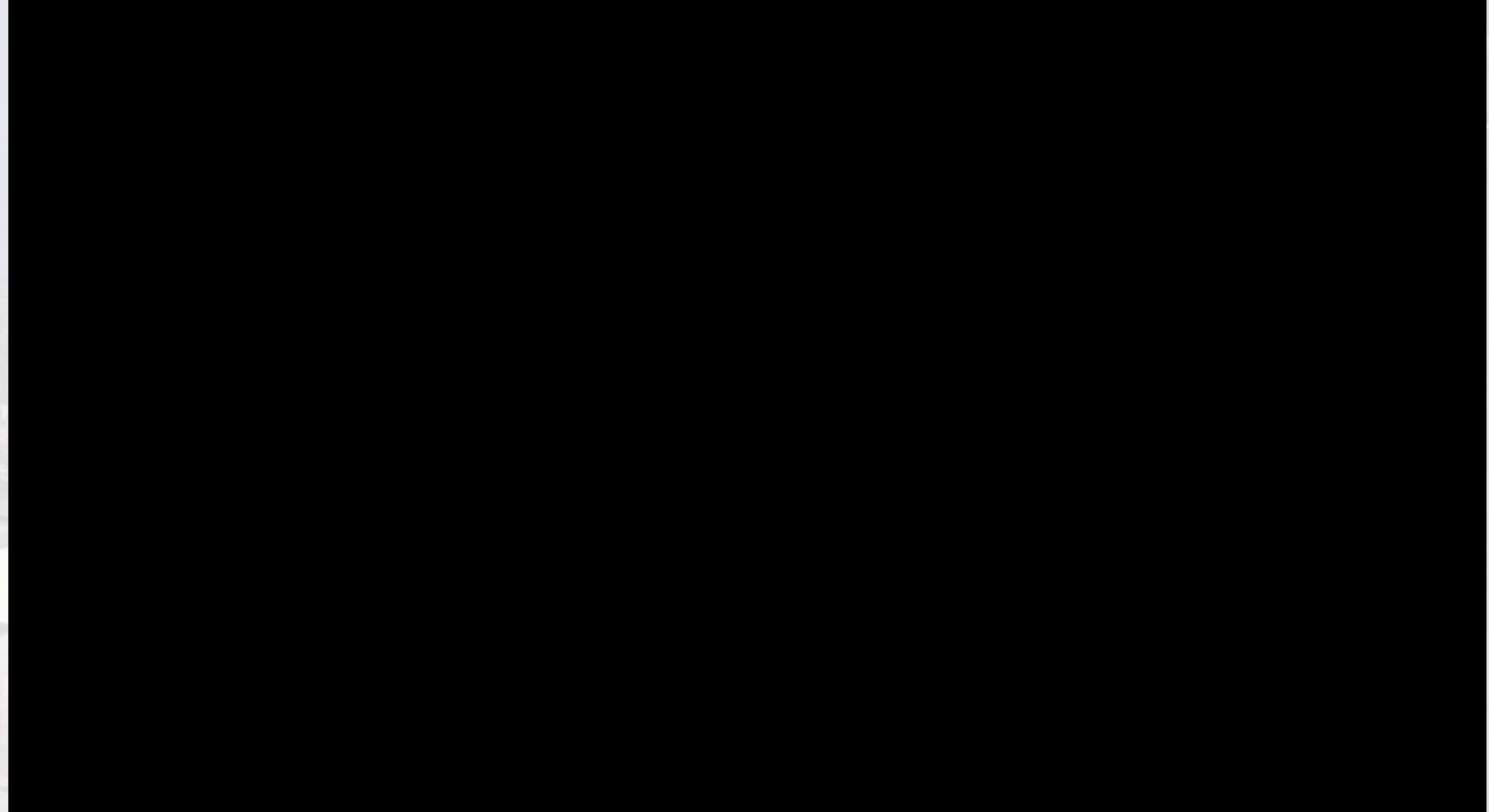


BEN VERGARA

Doctoral Research Assistant
Hybrid Energy Systems

**THE GEORGE
WASHINGTON
UNIVERSITY**

WASHINGTON, DC



22Q4 TASK FORCE UPDATES

UPDATES:

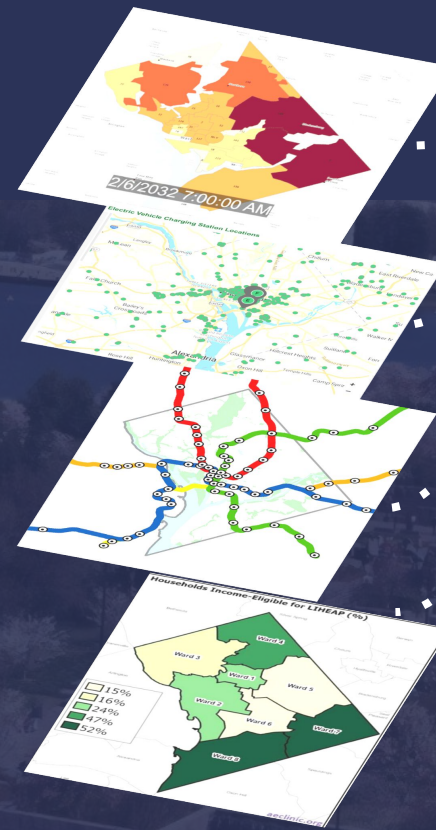
- Completion of Milestone 1:

Based on high energy burden, charging station scarcity, personal vehicle reliance, and grid infrastructure, outreach efforts are recommended for Benning Ridge in Ward 7 and Anacostia in Ward 8

- Limitations:
 - Overlay housing typology & utility service
 - Expand to other socioeconomic metrics

NEXT STEPS:

- Organize Roundtable with Key Stakeholders:
 - **William Ellis** from Pepco
 - **Derrick Dickens** from BGE
 - **Richard Ezike** from Joint Office of Energy and Transportation
 - **Andrew Bernish** from MD Dept. of Transportation
 - **Antoine Thompson** from Greater Washington Region Clean Cities Coalition (GWRCCC)
 - **Commissioner Ted Trabue**
 - **Commissioner Emile Thompson**



- Power Line Capacity Loading
- EV Charging Infrastructure
- Metro Availability
- Energy Burden & Income

Benning Ridge in Ward 7

Anacostia in Ward 8

