

# AEG Washington Stakeholder Challenge

Critical Infrastructure, Equity &  
Resilience



An Exelon Company

# About Pepco

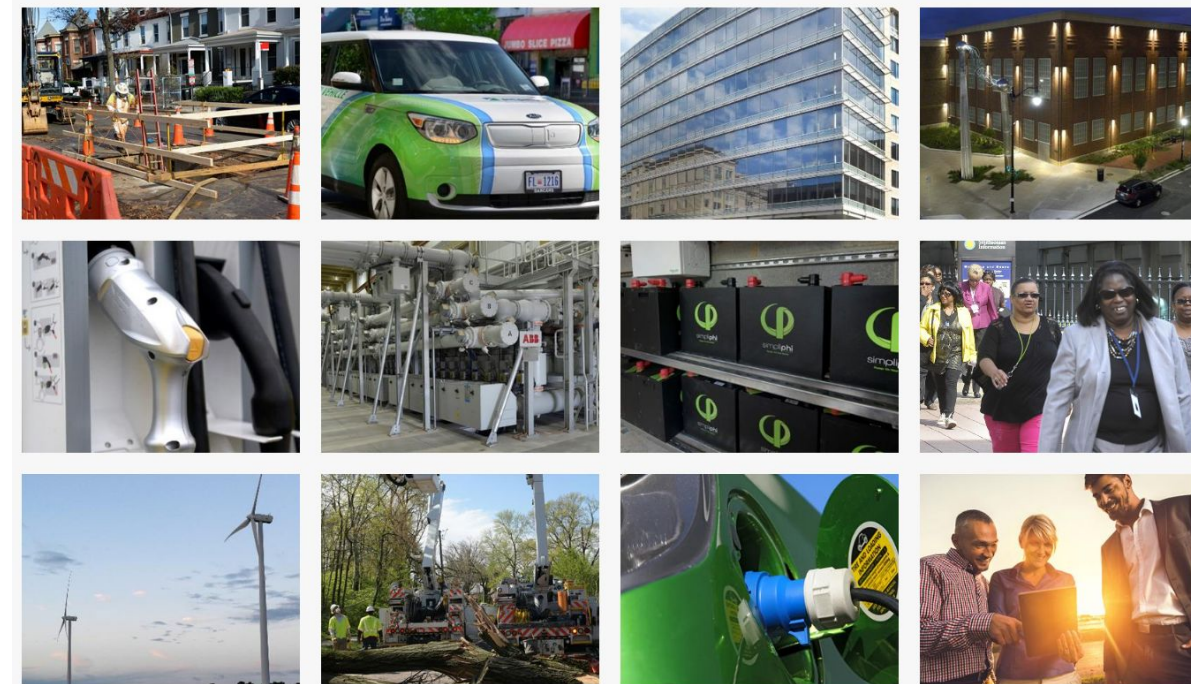
- Pepco delivers safe, reliable, sustainable and affordable energy to residents and businesses across the District of Columbia and Maryland
- We are a critical partner to the District in ensuring equitable investments and outcomes in the communities we serve
- Through investments to make the grid smarter, stronger and cleaner, we ensure all customers will benefit from the city's decarbonization efforts

## **Our Focus:**

- Safely Powering Reliability and Resilience
- Delivering World-Class Customer Experiences
- Advancing Clean and Affordable Energy Choices
- Supporting Communities

# Community Needs Outpacing the District's Clean Energy and Resiliency Transformation

- Recent challenges have amplified the existing inequities within our communities.
- More customers need services than those who have previously sought assistance, and more residents are vulnerable to health, social and economic crises, including climate change.
- To accelerate the benefits of a carbon free DC, we must combine resources and create partnerships to ensure that we are holistically addressing the causes of inequity, so all are in a position to benefit from carbon free solutions.



# Obstacle: Lack of Coordination Among Efforts

*Numerous companies and organizations are working toward similar goals, but there is limited coordination among them to ensure climate change investments are prioritized and made in an equitable manner*

## **Pepco can help DC achieve its goals in partnership and collaboration with others by:**

- Investing in modernizing the grid in order to facilitate smarter, cleaner energy technologies
- Using our own assets to support community programs
- Educating and encouraging residents to implement simple and available solutions
- Building out the electric public charging network
- Supporting efforts to increase the tree canopy and preserve open space
- Increasing energy affordability, improving local air quality and enhancing community resilience



# Benefits of Partnering to Do More

- Coordinated, focused investments will strengthen efforts, increasing reach and options
- Increased access to the education and training required for careers in the energy industry will lead to more opportunities for underserved residents and support the creation of more minority-owned businesses
- Enhanced collaboration leads to innovation, and in turn more effective solutions
- Our most vulnerable customers will not be left behind in the carbon free transformation



Making your electric system more resilient.™



**REDUCE ENERGY USE DC**

*Save more than money*



DC  
SUSTAINABLE ENERGY  
UTILITY



DEPARTMENT  
OF ENERGY &  
ENVIRONMENT

# Challenge Statement

Regarding Critical Infrastructure and Resilience, to achieve DC's Carbon and Equity goals, the most critical obstacle to overcome is the lack of a comprehensive, inclusive and coordinated approach, as stronger partnerships and more coordinated investments could reduce costs and maximize equity in all communities.

